

STAKEHOLDER MAPPING

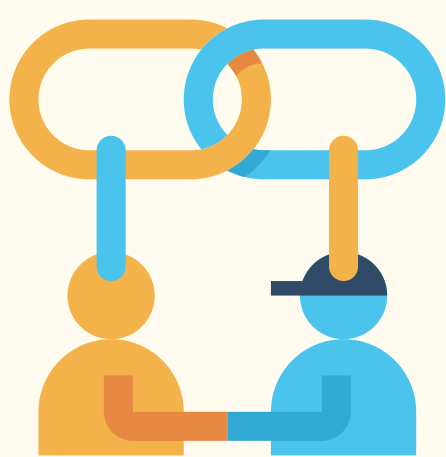
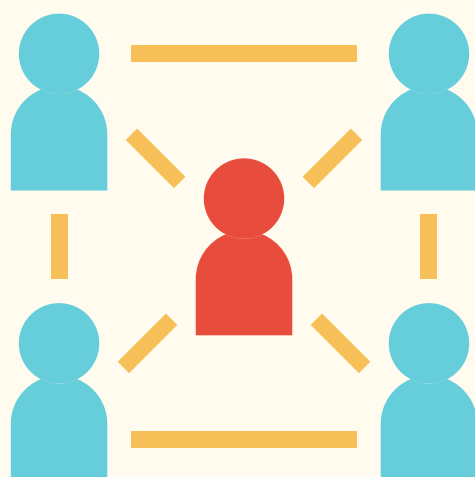
5 Essential Questions

There are SO many useful and valuable questions to ask to ensure you don't miss any voices and perspectives but if you can only ask 5, here's what we suggest.

01

The Who

Who do we hear from often?
Who don't you hear from? Why?



02

Relationship Status

How would you describe your relationship status with this stakeholder?

03

Triggers to Engage

How likely is this stakeholder to engage?
What additional supports might be needed?



04

Assumptions

What do you know for certain about the stakeholders?

What assumptions could you be making about your stakeholders?

05

Red dwarf

This was just to make sure you read all the way to the bottom. :)

In all seriousness, go back and ask these same questions with another team member. What did you miss, what can you add?



DIALOGUE PARTNERS

Anything is possible with a little dialogue.